

PS800 ADVANCED METAL PUMP

51 mm (2") Pump
Maximum Flow Rate:
704 lpm (186 gpm)



PUMP DATA

Specifications:

Height: 759 mm (29.9")
 Width: 439 mm (17.3")
 Depth: 338 mm (13.3")
 Est. Ship Weight: Aluminum 34 kg (75 lbs)
 316 Stainless Steel 100 kg (220 lbs)
 Alloy C 104 kg (228 lbs)
 Air Inlet: 19 mm (3/4")
 Liquid Inlet: 51 mm (2")
 Liquid Outlet: 51 mm (2")

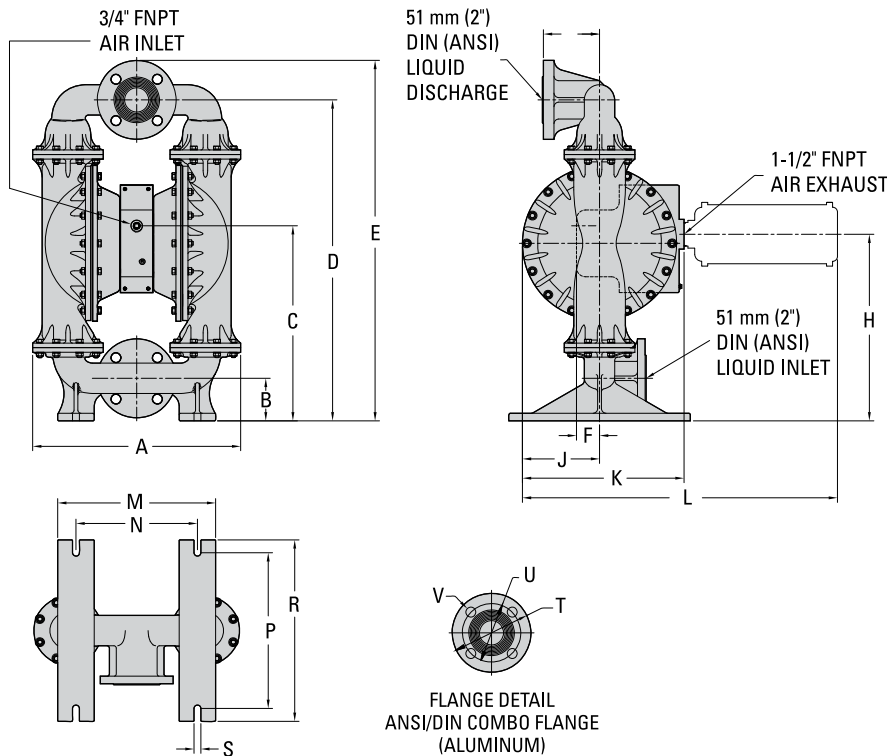
Temperature Limits:

Polypropylene	0°C to 79°C	32°F to 175°F
PVDF	-12°C to 107°C	10°F to 225°F
PFA	7°C to 107°C	20°F to 225°F
Neoprene	-18°C to 93°C	0°F to 200°F
Buna-N	-12°C to 82°C	10°F to 180°F
EPDM	-51°C to 138°C	-60°F to 280°F
Viton® FKM	-40°C to 177°C	-40°F to 350°F
Wil-Flex™	-40°C to 107°C	-40°F to 225°F
Saniflex™	-29°C to 104°C	-20°F to 220°F
Polyurethane	-12°C to 66°C	10°F to 150°F
Polytetrafluoroethylene (PTFE) ¹	4°C to 104°C	40°F to 220°F
Nylon	-18°C to 93°C	0°F to 200°F
Acetal	-29°C to 82°C	-20°F to 180°F
SIPD PTFE with Neoprene-backed	4°C to 104°C	40°F to 220°F
SIPD PTFE with EPDM-backed	-10°C to 137°C	14°F to 280°F
Polyethylene	0°C to 70°C	32°F to 158°F
Geolast®	-40°C to 82°C	-40°F to 180°F

¹Full-Stroke PTFE 4°C to 104°C (40°F to 220°F)

DIMENSIONAL DRAWING

Mouse-over letters to highlight dimensions



DIMENSIONS

ITEM	METRIC (mm)	STANDARD (inch)
A	439	17.3
B	89	3.5
C	396	16.1
D	676	26.6
E	759	29.9
F	48	1.9
G	117	4.6
H	390	15.4
J	161	6.4
K	338	13.3
L	659	25.9
M	330	13
N	254	10
P	325	12.8
R	378	14.9
S	15	0.6
ANSI/DIN COMBO		
T	165 DIA	6.5 DIA
U	122 DIA	4.8 DIA
V	20 DIA	0.8 DIA

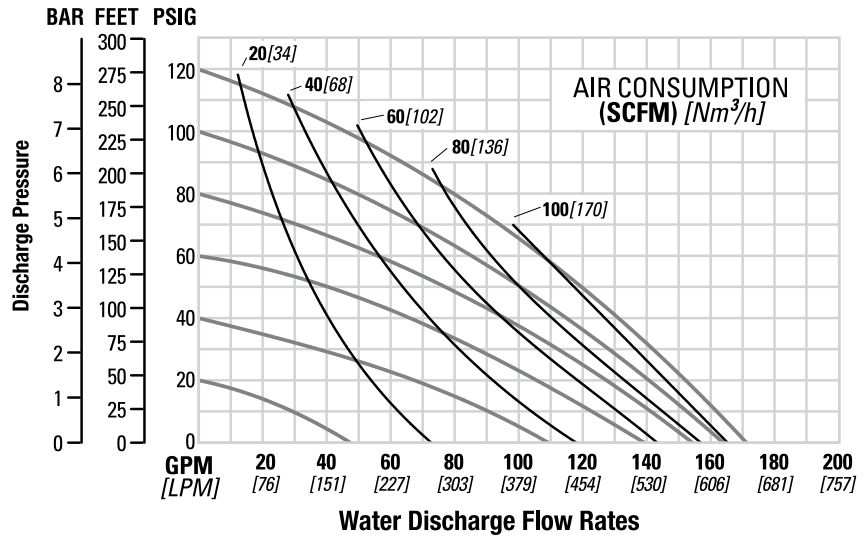
LW0024 REV. A

PS800 ADVANCED METAL PUMP

PERFORMANCE

PS800 METAL RUBBER-FITTED

Max. Flow Rate 647 lpm (171 gpm)
 Max. Inlet Pressure 8.6 bar (125 psi)
 Max. Solids Passage..... 6.4 mm (1/4")
 Max. Suction Lift.....6.4 m Dry (21.0')
 8.6 m Wet (28.4')



PS800 METAL EZ-INSTALL TPE-FITTED

Max. Flow Rate 697 lpm (184 gpm)
 Max. Inlet Pressure 8.6 bar (125 psi)
 Max. Solids Passage..... 6.4 mm (1/4")
 Max. Suction Lift..... 5.7 m Dry (18.7')
 8.6 m Wet (28.4')

